

XCCam-HDMI

HDMI-USB HD Camera

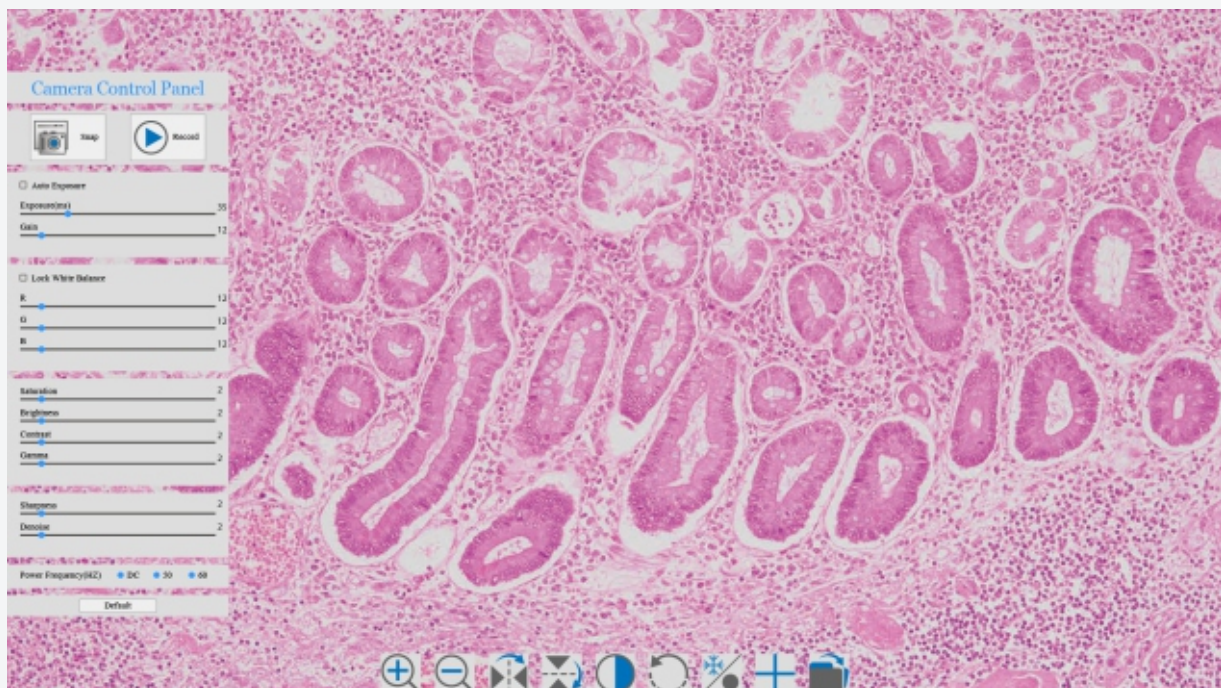
The XCCam-HDMI represents the latest in digital imaging technology, specifically developed for microscopy. With high-speed image processing, 60FPS high-definition video recording and simultaneous HDMI and USB display, XCCam-HDMI is the camera of choice for a wide range of microscopy applications.



Key Features:

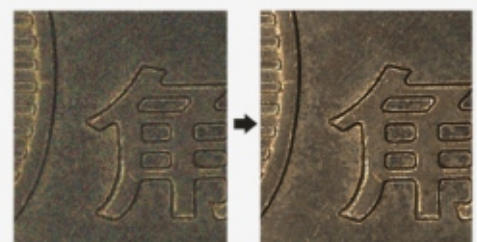
HDMI and/or USB Display

XCCam-HDMI allows video display, recording and snapshot functions through USB and/or HDMI interface. When connected to an HDMI monitor, the camera functions are controlled by a mouse and files are stored to the SD card. When connected to a computer the video is displayed independently on a separate monitor via HDMI, ensuring optimal video performance and image processing.



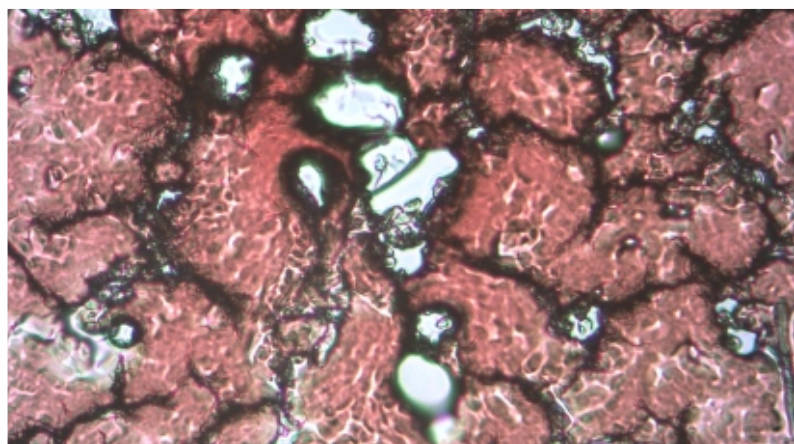
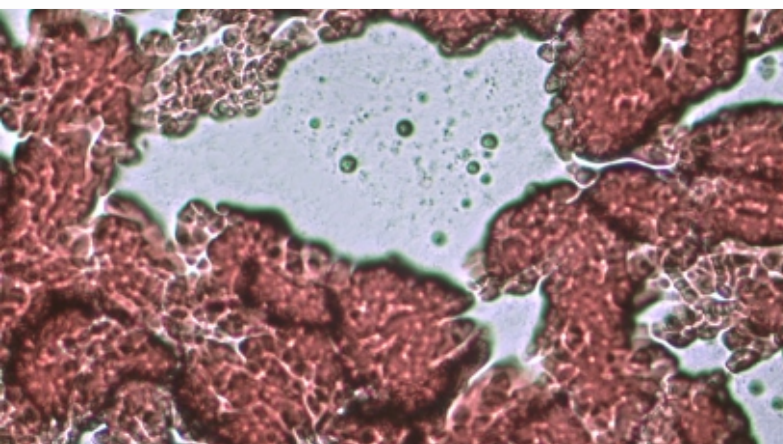
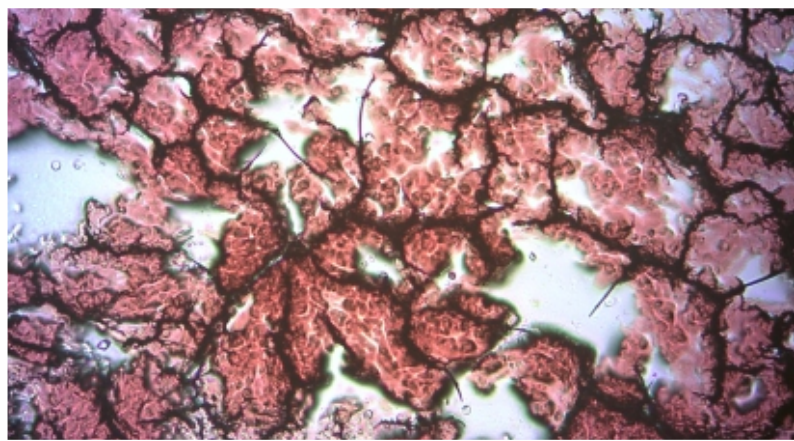
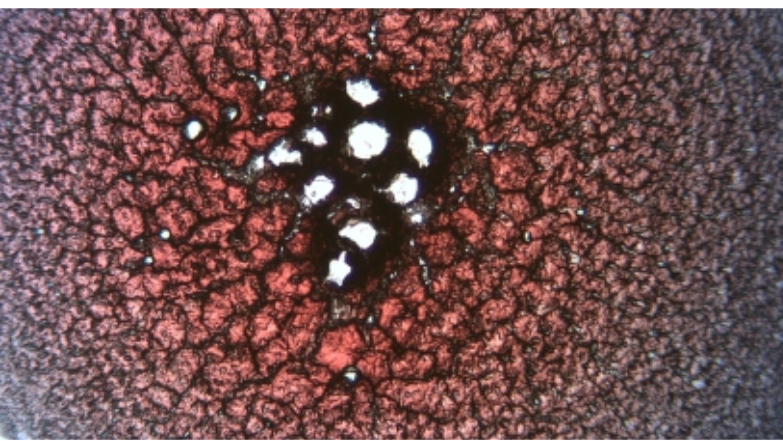
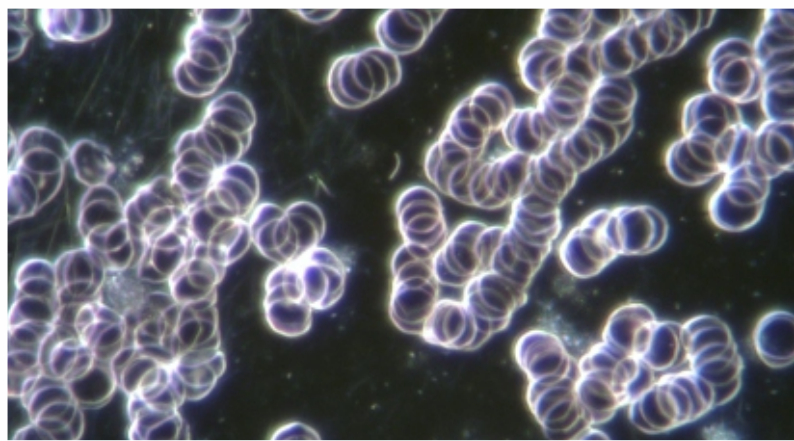
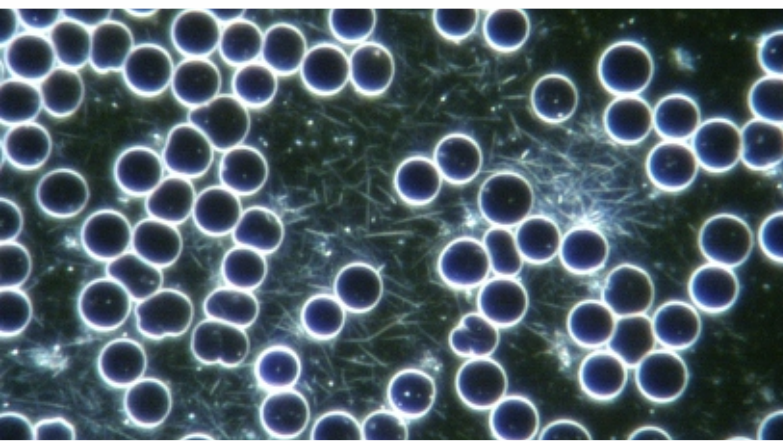
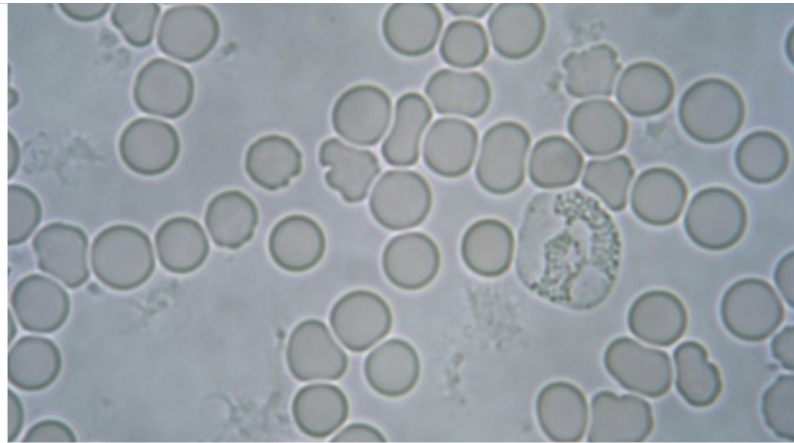
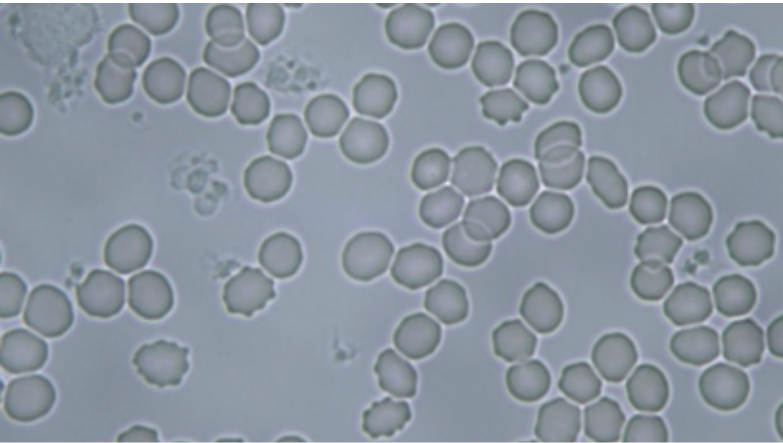
True 3D Noise Reduction

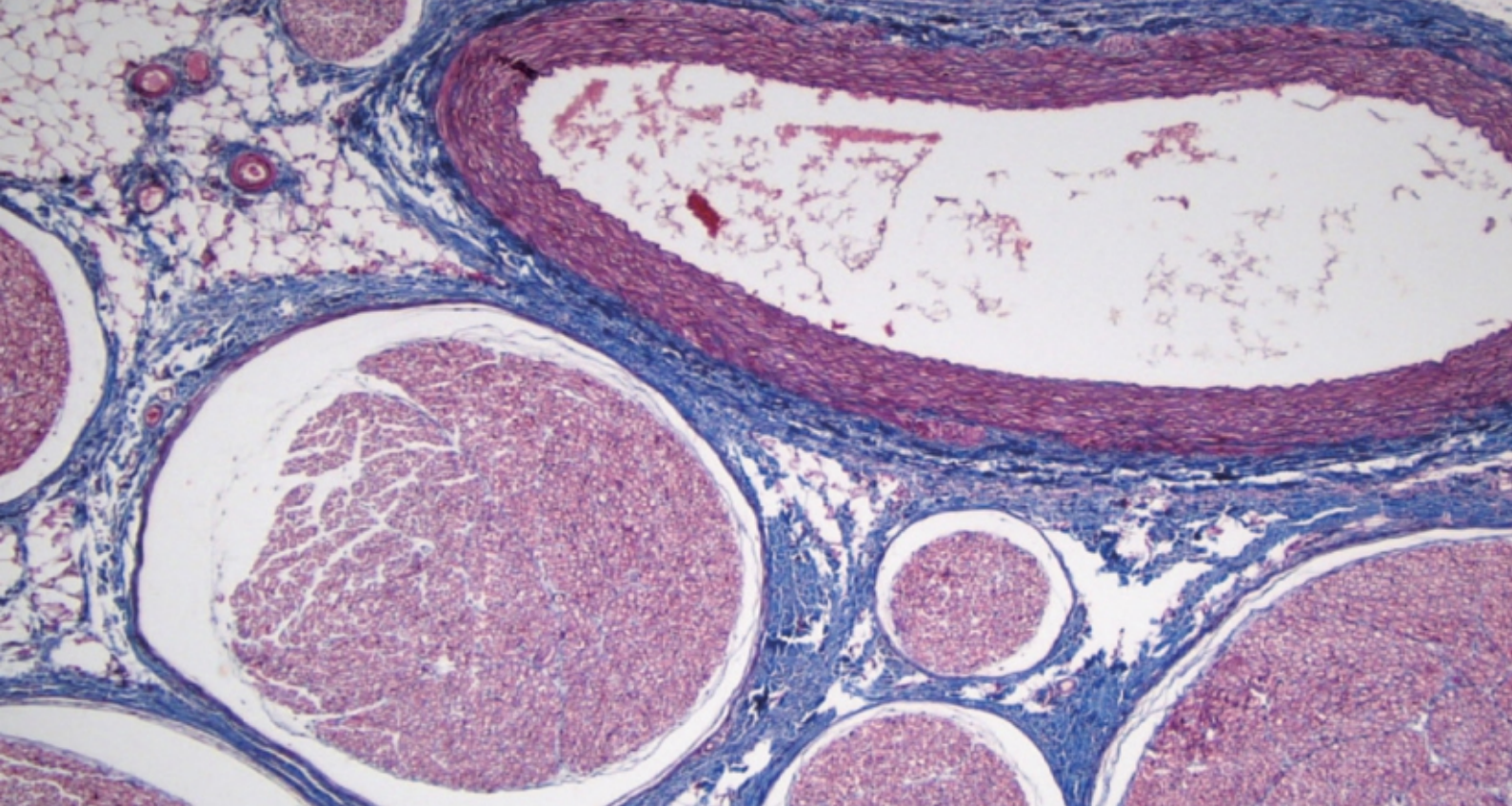
An increase in exposure time usually increases the image noise. However, the integrated 3D noise reduction function keeps the XCCam-HDMI image always clean and sharp. The following comparison images show the amazing 3D noise reduction effect.



Improved Auto-Exposure Functions in Darkfield & Dry Blood

XCCam-HDMI is ideally suited to live and dry blood imaging. It's unique auto-exposure function and ultra-fine colour engine ensures perfect colour reproduction. This improves ease of use, without the need to enable different parameters.





Key Features:

Pixel Size:	2.8 x 2.8
G-Sensitivity:	510mv with 1/30s
FPS:	60
Resolution:	1920 x 1080
Exposure:	0.1ms ~ 1sec

Specifications:

Software Environment (for USB2.0 Connection)	
Operating System	Microsoft® Windows® XP /Vista /7/8/8.1/10(32 & 64 bit) OSx(Mac OS X) Linux
PC Requirements	CPU: Equal to Intel Core2 2.8GHz or Higher
	Memory: 4GB or More
	USB Port: USB2.0 High-speed Port
	Display: 19" or Larger
	CD-ROM
Operating Environment	
Operating Temperature(in Centidegree)	-10~ 50
Storage Temperature(in Centidegree)	-20~ 60
Operating Humidity	30~80%RH
Storage Humidity	10~60%RH
Power Supply	DC 12V/2A Adaptor